

Unicast Drag Chains

Superior Strength and Abrasion Resistance

Unicast Drag Chains are the industry choice for a wide range of heavy-duty applications where superior strength and abrasion resistance are needed. The Unicast casting process enables the design of wear protective features which offer these important benefits:

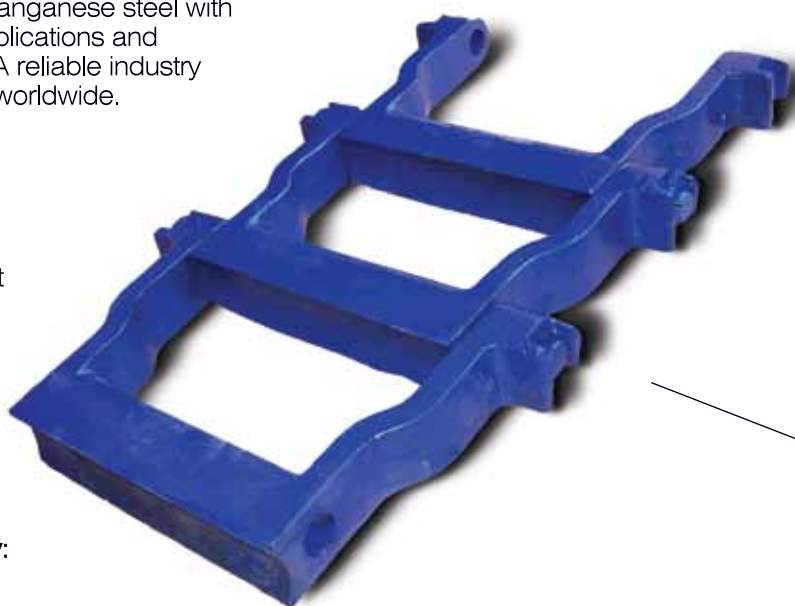
Unicast Proprietary Alloys for Different Applications:

1. **Work hardening alloy:** Manganese steel with chrome for high impact applications and temperatures up to 250C. A reliable industry favorite tested and proven worldwide.

2. **High-strength quench and tempered steel:** A unique blend of chromium, manganese, moly, and nickel with carbon steel that provides three times the strength of carbon steel alone. Designed for high temperature and abrasive applications. Hardened for wear resistance and high strength.

Chromium Carbide Overlay: Extend chain wear life with hard surfacing of 55 to 60 Rockwell C hardness.

Precision Casting: Unicast chains are cast using high integrity molding methods producing consistent, solid chain links which offer exceptional dimensional control of the chain. The one-step casting method eliminates failure due to weld cracks and greatly reduces production costs—a savings reflected in Unicast prices.



Scooped wing/ barrel design creates a dead bed to capture wear protective material. Longer wear life.

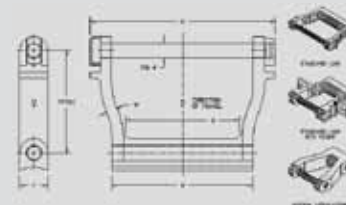


Pin head protection prevents wear on the pin and keeper while positioning the pin in place.



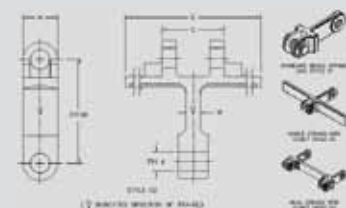
Splined keeper on hardened steel pin retains the pins for the full life of the chain ensuring extended wear life and reliability.

Heavy-Duty Links



PART NUMBER	PITCH	BARREL "B"	OVERALL WIDTH "O"	PIN DIAMETER	WALL "W"	SIDE BAR HEIGHT "T"	MAX SPROCKET WIDTH "S"	RECOM. WORKING LOAD	AVERAGE ULTIMATE STRENGTH	AVERAGE WEIGHT
U3042-1	5.00"	4.70"	6.50"	0.625"	0.50"	1.56"	3.25"	8,720 Lbs	43,600 Lbs	13.7 Lbs/ft
U3088-1	5.00"	7.64"	10.12"	0.75"	0.50"	1.62"	6.00"	12,600 Lbs	63,000 Lbs	20.3 Lbs/ft
U3033-1	6.00"	5.12"	8.32"	1.00"	0.50"	2.00"	3.75"	22,400 Lbs	112,000 Lbs	22.5 Lbs/ft
U3089-1	9.00"	8.50"	12.00"	1.25"	0.79"	2.50"	6.00"	35,000 Lbs	175,000 Lbs	35.6 Lbs/ft
U3090-1	9.00"	9.25"	14.00"	1.25"	1.00"	2.50"	6.50"	35,000 Lbs	175,000 Lbs	42.3 Lbs/ft
U3091-1	9.00"	12.68"	18.00"	1.25"	1.18"	2.50"	10.00"	35,000 Lbs	175,000 Lbs	53.5 Lbs/ft
U3092-1	9.00"	12.44"	16.38"	1.25"	1.00"	2.50"	10.25"	35,000 Lbs	175,000 Lbs	47.7 Lbs/ft
U2479-1	9.00"	12.60"	18.00"	1.25"	1.00"	2.50"	10.25"	35,000 Lbs	175,000 Lbs	54.3 Lbs/ft
U2479-2	9.00"	12.60"	20.00"	1.25"	1.00"	2.50"	10.25"	35,000 Lbs	175,000 Lbs	55.8 Lbs/ft
U3093-1	12.00"	17.87"	24.00"	1.38"	1.38"	2.75"	14.38"	42,200 Lbs	211,000 Lbs	66.9 Lbs/ft

Single-Leg Links



PART NUMBER	PITCH	COLLAR WIDTH "C"	EXTENSION WIDTH "E"	PIN DIAMETER	WALL "W"	HEIGHT "H"	STYLE	RECOM. WORKING LOAD	AVERAGE ULTIMATE STRENGTH	AVERAGE WEIGHT
U3102-1	5.60"	1.69"	2.60"	1.00"	0.83"	2.00"	01	10,000 Lbs	50,000 Lbs	7.9 Lbs/ft
U3102-5	5.60"	1.69"	3.10"	1.00"	0.50"	2.00"	03	16,600 Lbs	99,600 Lbs	8.9 Lbs/ft
U3102-15	5.60"	1.69"	15.90"	1.00"	0.50"	2.00"	02	7,380 Lbs	50,000 Lbs	16.2 Lbs/ft
U3086-1	6.00"	3.62"	7.87"	1.00"	0.83"	2.00"	02	13,340 Lbs	66,700 Lbs	15.5 Lbs/ft
U1077	6.30"	2.80"	1.25"	0.86"	0.60"	1.75"	01	11,720 Lbs	58,600 Lbs	6.8 Lbs/ft
U1114	7.87"	2.36"	3.15"	1.00"	1.71"	2.00"	03	26,000 Lbs	156,000 Lbs	9.8 Lbs/ft
U3108-01	9.00"	5.28"	11.87"	1.06"	1.30"	2.64"	02	15,700 Lbs	78,500 Lbs	26.3 Lbs/ft

You May Also Need:

- ✓ Chrome Carbide Overlay
- ✓ Extra Pins
- ✓ Sprockets

Crusher Parts

Hammers & Breaker Blocks

Apron Feeder Pans

Chute Liners

Mill Liners

Partition Grates

Cyclone Thimble Segments

Nose & Feed Ring Segments

Drag Chains

Clinker Breaker Hammers

Grizzly Panels

Clinker Cooler Grates

Shut-Off Valves

Diverter Valves

Sales Office and Plant CANADA

871 Stremel Road
Kelowna, BC Canada V1X 5E6
Tel: (250) 807-7999
Fax: (250) 807-7990
wearparts@unicast.ca
www.unicast.ca

Sales Office USA

2923 Robin Hood Lane
Fayetteville, AR USA 72703
Tel: (479) 444-1900
Fax: (479) 444-9838
jim@unicast.ca

Sales Office MEXICO

sales@unicastmexico.com
www.unicastmexico.com

