

## **Cage Assemblies & Grates**

*Unicast hammermill cage assemblies and discharge grates are cast for the longest wear life.*

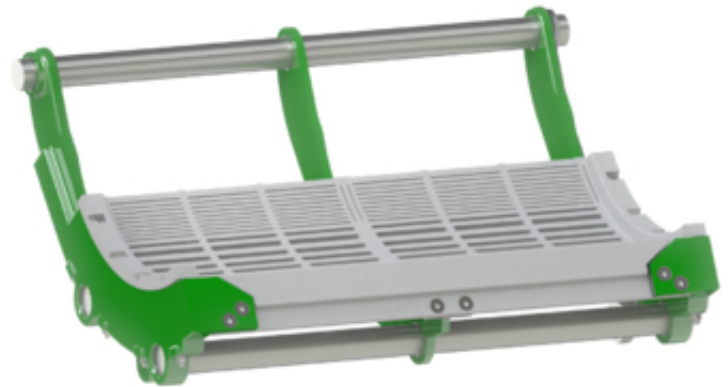
---

### **UNICAST HAMMERMILL CAGE ASSEMBLIES**

A Unicast innovation designed to save time and hassle. Save time with a cast block of cage bars for quick and easy installation.

### **UNICAST HAMMERMILL DISCHARGE GRATES**

Unicast one-piece discharge grates are cast in our WR series alloy for longest wear life.



### **FEATURES & BENEFITS**

- Stronger materials result in longer wear life than alternatives
- Superior one-piece cast design cages and grates adds strength and speeds up installation

## DATA SHEET

---

### Hammermill Wear Parts

# UNICAST

**REDEFINING WEAR PARTS**

*Cast replacement wear parts  
with improved wear life.*

**250-807-7999**

**wearparts@unicast.ca**

**UNICAST.CA**



Hammermill Grates